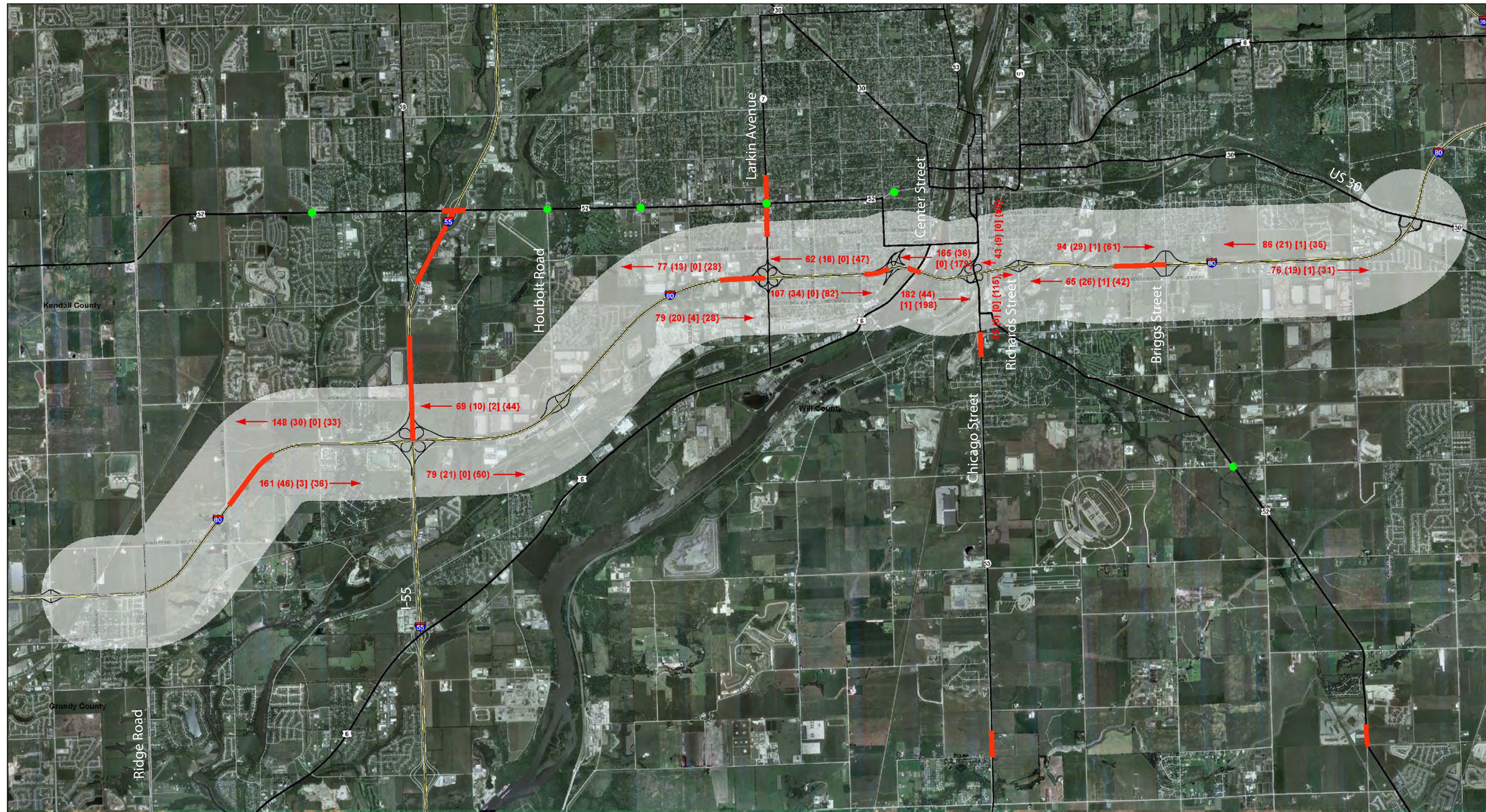
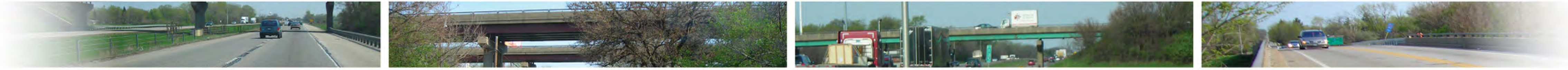


I-80 Crash Data Summary



Severe Crash Locations

2009 Illinois 5% Report Locations
(Based on 2003-2007 data)

5% Segments			
Road Name	From	To	Length (mi)
Interstate 55	18.49	19.34	0.85
Interstate 55	16.82	17.93	1.11
Jefferson St	3.47	3.73	0.26
Interstate 80	1.31	2.04	0.73
Interstate 80	7.42	7.90	0.48
Interstate 80	9.02	9.28	0.26
Interstate 80	9.48	9.62	0.14
Interstate 80	11.61	12.18	0.57
Larkin Ave	14.68	15.34	0.66
Chicago St	0.62	0.89	0.27

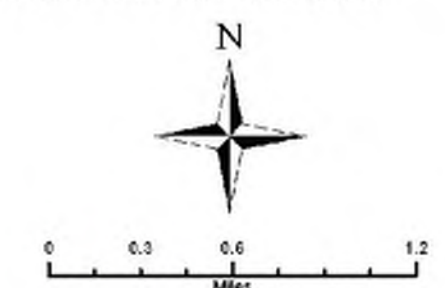
5% Intersections		
Road Name	Intersection	Location
Troy Rd	River Rd	2.08
Jefferson St	Houbolt Rd	4.58
Jefferson St	126 th Infantry Dr	5.62
Jefferson St	Larkin Ave	6.92
Jefferson St	Wilcox St	8.30
Manhattan Rd	Laraway Rd	3.29

Crash locations listed above are those located in proximity to the Project Study Area.

I-80 Phase I Study Limits (IRIS)

County	From	To
Grundy/Kendall	18.75	19.76
Will	0.00	14.99

IRIS - Illinois Roadway Information System. The distances listed are in miles along the route by county. This data came from IDOT's IRIS database.



- Legend**
- 5% Crash Intersections
 - 5% Crash Segments
 - ▭ Project Study Area

xx = Total Crashes (2005 - 2008)
 (xx) = Total Injuries [Type A, B, & C] (2005 - 2008)
 [xx] = Total Fatalities (2005 - 2008)
 {xx} = Crashes Per Mile (2005 - 2008)



As part of the Highway Safety Improvement Program (HSIP), states are required to submit an annual report to the Federal Highway Administration (FHWA) describing at least 5% of highway locations exhibiting the most pressing safety needs. Identified 5% locations shown on this map were developed for the 2009 HSIP, and are included in the 2009 Five Percent Report to the FHWA. The analysis results were based on IDOT data and represents years 2003 to 2007. The roadway data and intersection data was developed by IDOT and represents conditions at the end of year 2008. The data was used "as is" for analysis purposes and should be interpreted accordingly.